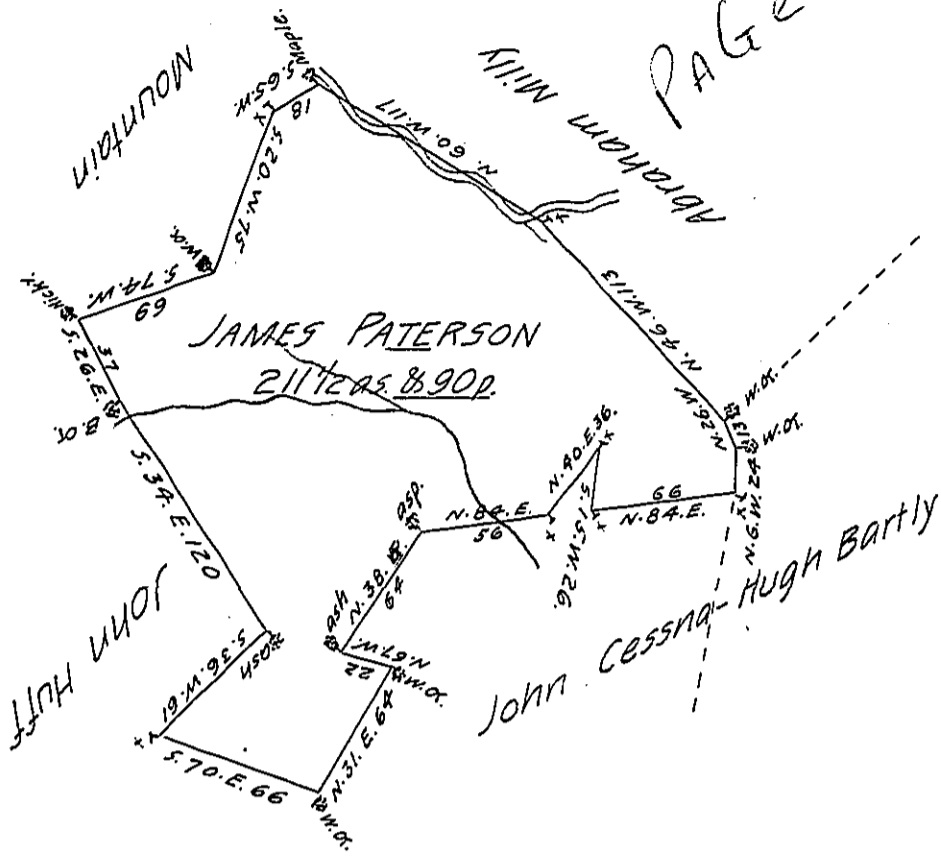


PAGE-207



Brought of Tract of Land situate in Friends Cove Joining Lands of John Cessna and Abraham Milly, in the County of Bedford. Containing Two Hundred and Eleven Acres & Ninety Parcels & the Usual Allowance of Six $\frac{1}{2}$ Cent for Roads &c.

Survey'd the 16th day of December 1784. In pursuance of a Warrant Dated the 25th day of Sept^r 1784.

George Woods, D.S.

John Lukins, Esq^r. S.G.

IN TESTIMONY that the above is a copy of the original remaining on file in the Department of Internal Affairs of Pennsylvania, made conformably to an Act of Assembly approved the 16th day of February, 1833, I have hereunto set my Hand and caused the Seal of said Department to be affixed at Harrisburg, this twenty-third day of April 1906.

Joac^r R. Brown
 Secretary of Internal Affairs.